

COLÓNIA • GERMANY

28-29 NOVEMBER 2017

VIALONGA'S SCHOOL CLUSTER



# Creative Learning in Action

## KA2 – 2017-2019

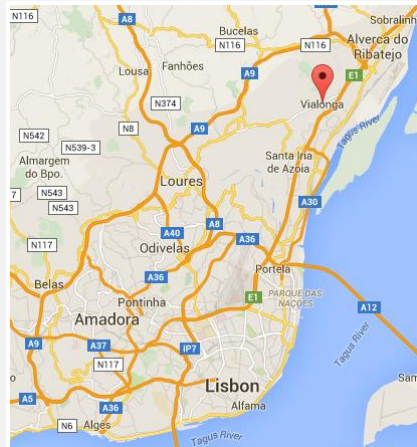


<https://youtu.be/aGalJlZWj8k>

MEET THE PORTUGUESE TEAM

# VIALONGA

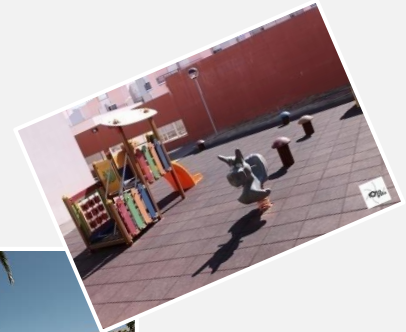
- Vialonga is a small town (around 22 000 inhabitants) in the suburban area of Lisbon with a large variety of inhabitants coming from different origins, living in social and low price houses, generally with low incomes.



# VIALONGA'S GROUPING SCHOOLS

□ Vialonga's school cluster has 9 schools and is the only public school cluster in the area

(1 kindergarten; 7 primary schools (4 with kindergarten) and 1 elementary and secondary school).

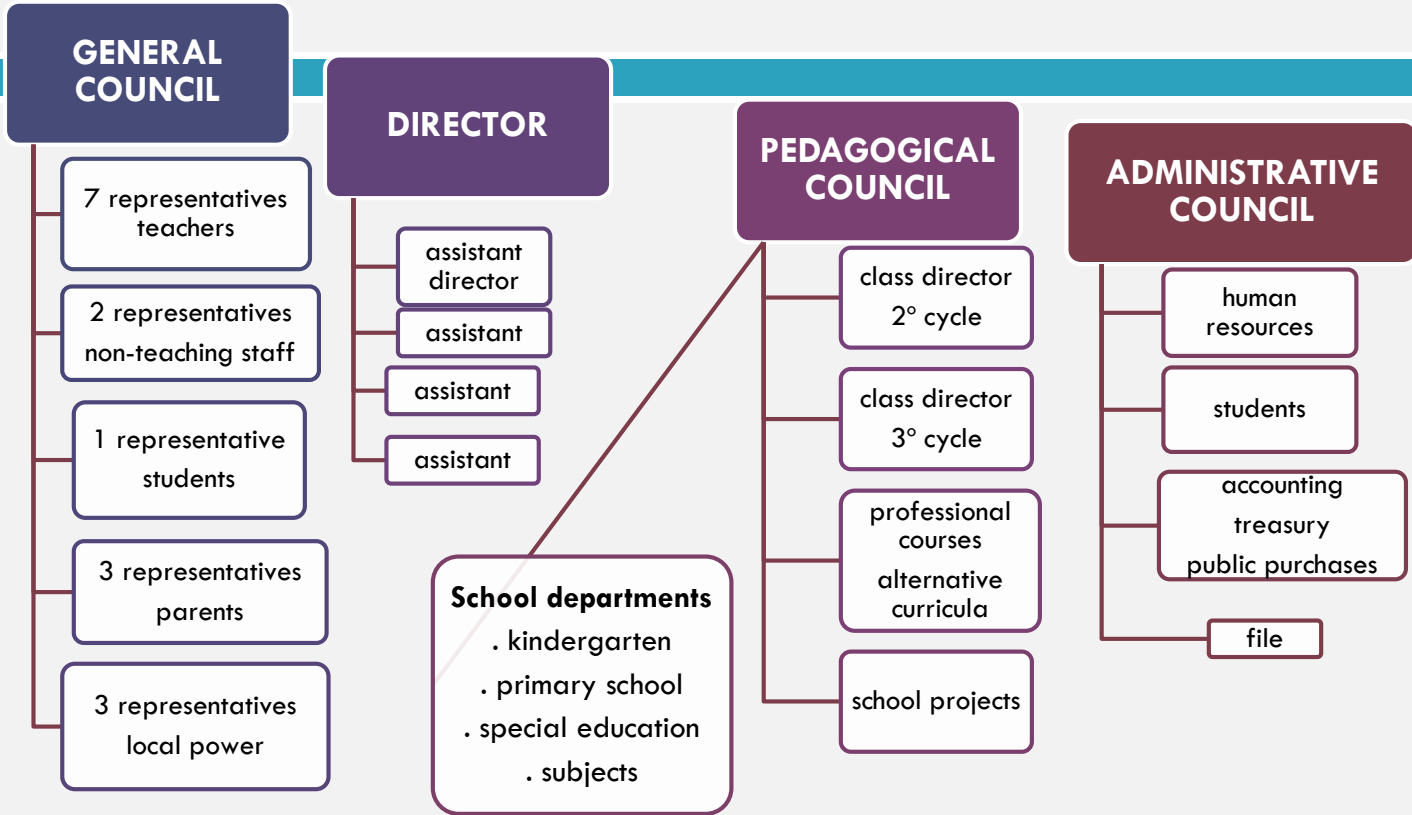


# VIALONGA'S SCHOOL CLUSTER

- The cluster involves more than 2000 students.
- We are considered a TEIP cluster (educational territory of priority intervention) → plan to identify priorities and main goals; additional human resources; teacher's training; “critical friend”



# SCHOOL ORGANIZATION



	Classes	Students	Students with special educational needs	
Pre school 3-6	12	250	9	
Primary Age 6-10	38	870	45	
2nd 3rd cycle 10-15	42	1020	72	
Secondary 15-18	5	90	18	
Adult education	2	45		



# VIALONGA'S SCHOOL CLUSTER

## OUR MAIN GOALS

### reduce

- . absenteeism
- . school dropout
- . indiscipline

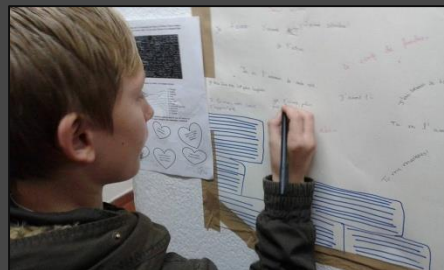
### Improve

- . learning quality
- . results

# VIALONGA'S SCHOOL CLUSTER

What  
do we  
offer?

- . regular education
- . music teaching
- . alternative curricula
- . vocational courses
- . professional courses
- . unit for students with special needs
- . european projects
- . orchestra
- . school sports
- . theater



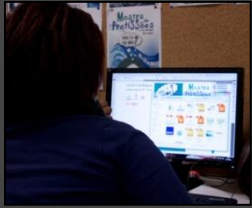
regular education



music learning . since 2005



alternative curricula



jewelry



graphic design



photography



woodwork



locksmiths



multimedia

# vocational and professional courses



2 support units for children with multiple disabilities

working with special needs . Since 2008



<https://youtu.be/6iZuGfwzvTg>

school orchestra • since 2007





KA2 . ERASMUS PLUS



KA1 . ERASMUS PLUS

european projects . since 2004



school sports



practicing theatre . THEATRE CLUB

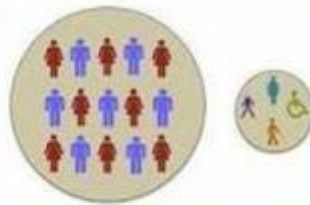
# School for All

LINKS

**EXCLUSÃO**



**SEGREGAÇÃO**



**INTEGRAÇÃO**

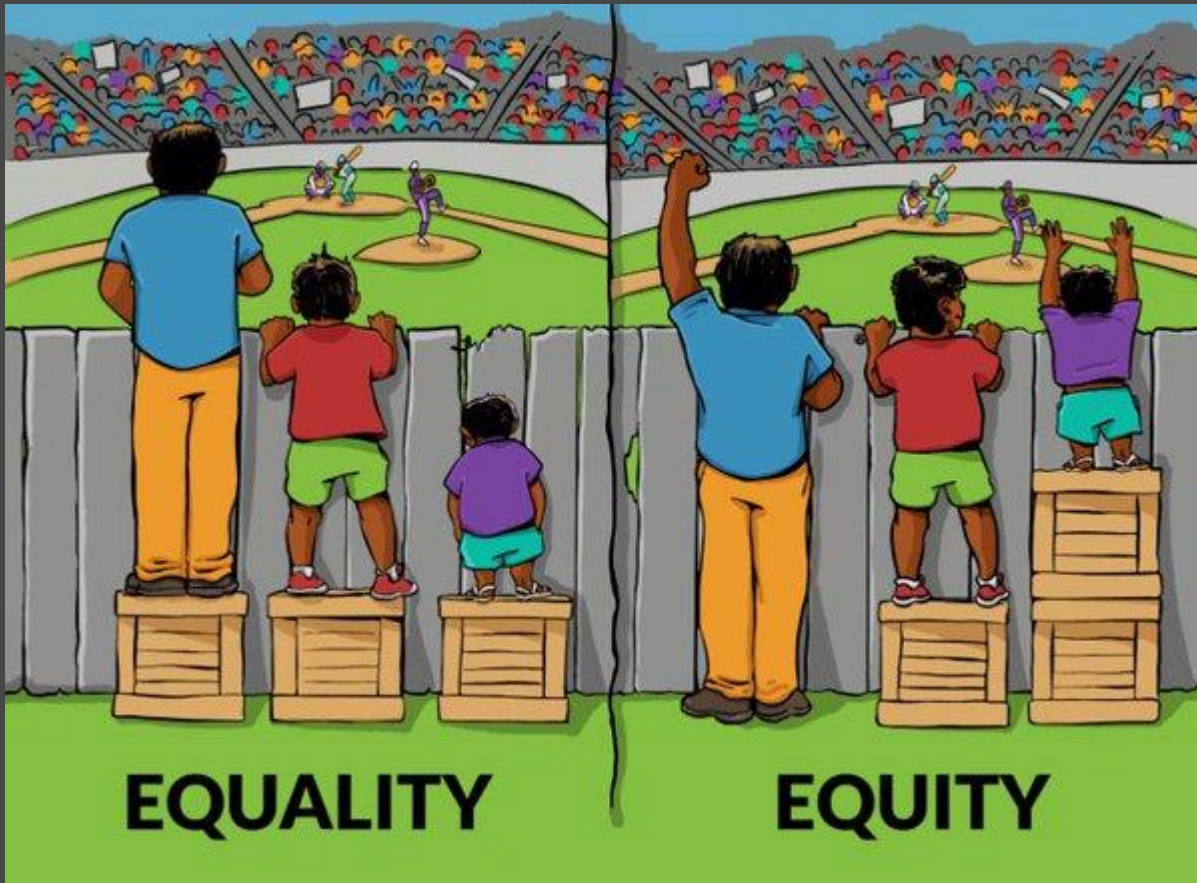


**INCLUSÃO**



editado por:  [www.FilosofiaHoje.com](http://www.FilosofiaHoje.com)

LINKS



LINKS

# Students with special educational needs

## Assessment

### Individual educational program

- educational support
- curricular adjustments
- adequacy in the evaluation process
- adequacy in the enrollment process
- individual specific curriculum
- . technologies for support

# HOW DO WE COMMUNICATE?

→ inside the cluster

→ with the community

<http://aevialonga.edu.pt/moodle/>

<https://www.facebook.com/aevialonga/?ref=hl>

<http://aevialonga.wix.com/siteaevialonga>

LINKS